

ON THE ROAD

photography RYAN JEROME
production & styling STEPHAN KALLAUS
make up NOTBURGA ZOEGLER using MAKE UP FOR EVER
model JANICE FRONIMAKIS





outfit **DAKS**
shoes **TOMS**
bag **ALGER**



outfit **GIANFRANCO FERRE**
hat **STETSON**



suit **HUGO**
shirt **SAND**
suitcase **ALGER**



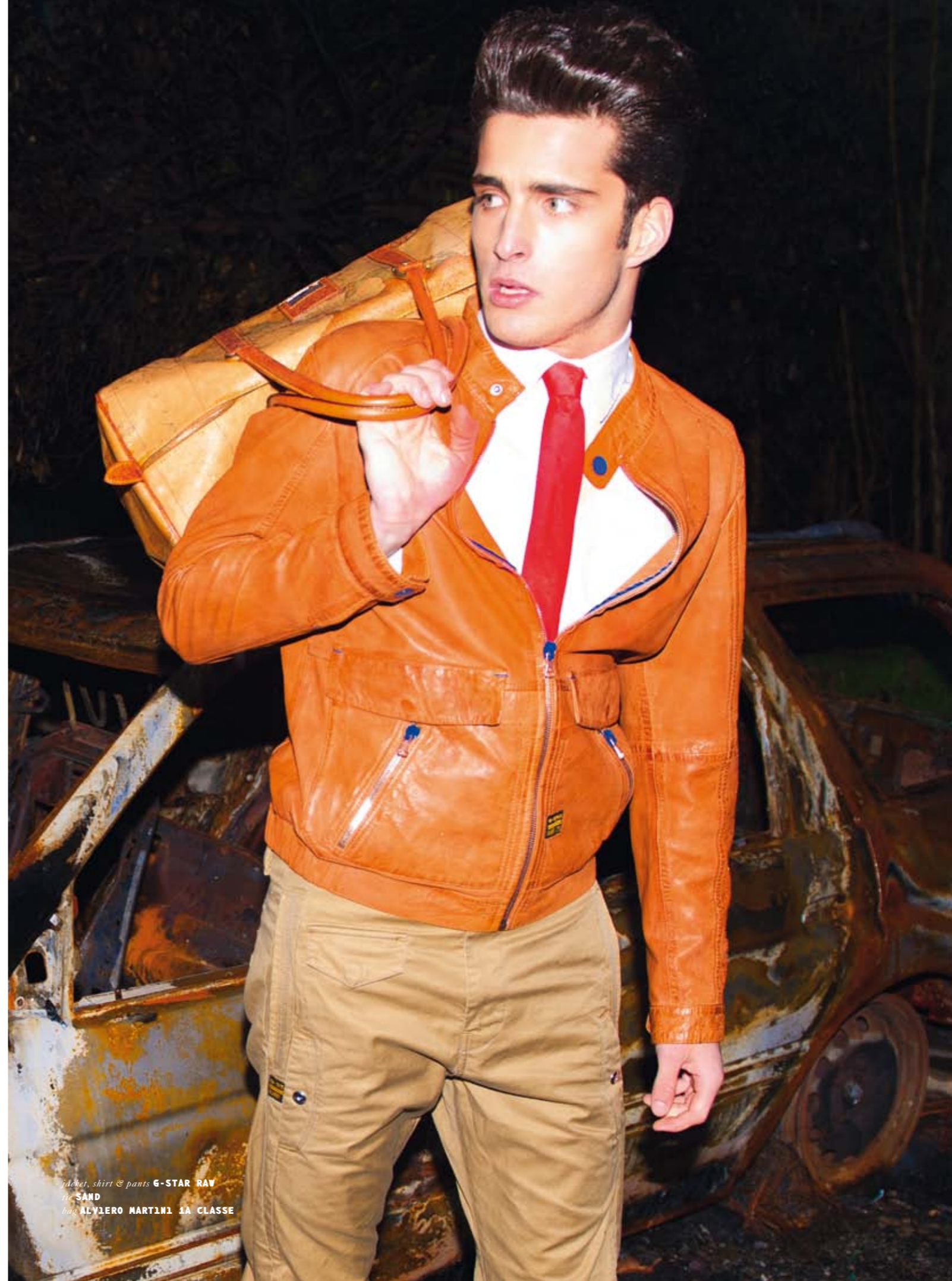
outfit **PRADA**
glasses **FREUDENHAUS**
suitcase **STYLIST'S OWN**



outfit TRUSSARDI
shoes G-STAR



outfit **BYBLOS**



jacket, shirt & pants **G-STAR RAV**
trousers **SAND**
bag **ALYVIERO MARTINI 1A CLASSE**